

JBossESB Configuration Editor

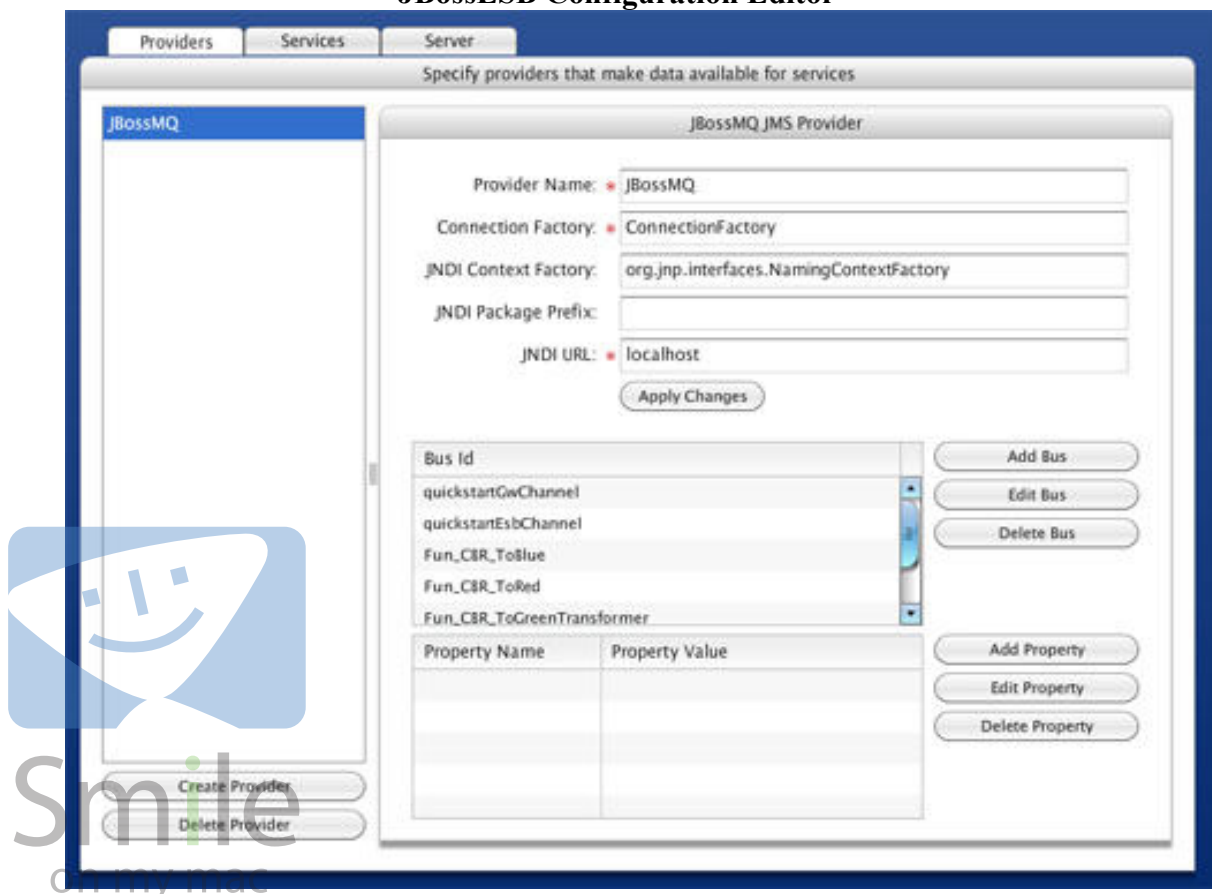
Overview

Browsing and editing the configuration of a running JBossESB instance is a requirement in many business cases. The JBossESB configuration editor is an Adobe Flex app which exposes the running ESB configuration via a web browser. A user interface is provided for loading a configuration from the server, editing it, then saving it back to the server.

First Steps

1. Read the *JBossESB Programmer's Guide* (included in the docs folder of the distribution). Chapter 5 explains the structure of the `jbossesb.xml` configuration.
2. Install JBossESB. Follow the directions on installing JBossESB into a JBossAS server instance as described in the *Getting Started Guide*.
3. Copy 'configapp.war' into the deployment directory for JBossAS (usually `server/default/deploy`).
4. Copy 'action-templates.xml' into the config directory for JBossAS (usually `server/default/conf`).
5. Start the JBossAS instance and test the installation of the configuration app by browsing to <http://localhost:8080/esbconfig/ESBConfigEditor.swf>.

JBossESB Configuration Editor



Using the Configuration Application

When the application starts, the currently running configuration is automatically loaded into the editor. The *Providers* and *Services* tabs at the top of the editor provide views into the two top-level sections of the config file.

Providers Tab

The *Providers* tab contains the list of providers defined in the current configuration. Clicking on the name of a provider displays details about buses and properties available on the provider. Buses and properties may be added, edited, or deleted using the detail pane to the right of the providers list.

Services Tab

The *Services* tab contains the list of services defined in the current configuration. Clicking on the name of a service displays details about the listeners and actions configured for that service. Listeners and actions may be added, edited, or deleted using the detail pane to the right of the services list.

Server Tab

The *Server* tab provides operations for interacting with the JBossESB server instance. Available operations include:

- Configuring the URL used to access the server (default is localhost:8080)
- Reloading the active configuration information from the server.
- Saving an edited configuration back to the server.
- Viewing the generated XML for the edited configuration.
- Pasting XML from an existing configuration so that it can be edited and uploaded to the server.
- Creating an empty configuration that can be populated via the editor, then uploaded to the server.

Example: Creating a Service that Uses an FTP Provider

This example explains how to create the provider and service necessary to pull data onto the bus from an FTP server and use it. Create an empty configuration by clicking the *Server* tab and selecting *Create New Configuration*.



Step 1: Create the FTP Provider

Click the *Providers* tab and choose *Create Provider* at the bottom of the providers list. Enter a name for the provider and choose *FTP Provider* from the dropdown. Click *Create* to add the new provider. The fields with red marks are required. Fill in the FTP hostname and click *Apply Changes* to update the edited configuration. Note: The changes are not uploaded to the server until you choose *Save Configuration* in the *Server* tab.

Create the FTP Provider

The screenshot shows the 'Providers' tab in the 'Smile on my mac' application. The window title is 'Specify providers that make data available for services'. On the left, a list shows 'MyFtpProvider' selected. At the bottom of this list are 'Create Provider' and 'Delete Provider' buttons. The main area is titled 'MyFtpProvider FTP Provider'. It contains a 'Provider Name' field with 'MyFtpProvider' and a red asterisk, and a 'Host Name' field with a red asterisk. Below these is an 'Apply Changes' button. Further down is a 'Bus Id' table with 5 empty rows. To its right are 'Add Bus', 'Edit Bus', and 'Delete Bus' buttons. At the bottom is a 'Property Name' vs 'Property Value' table with 5 empty rows. To its right are 'Add Property', 'Edit Property', and 'Delete Property' buttons.

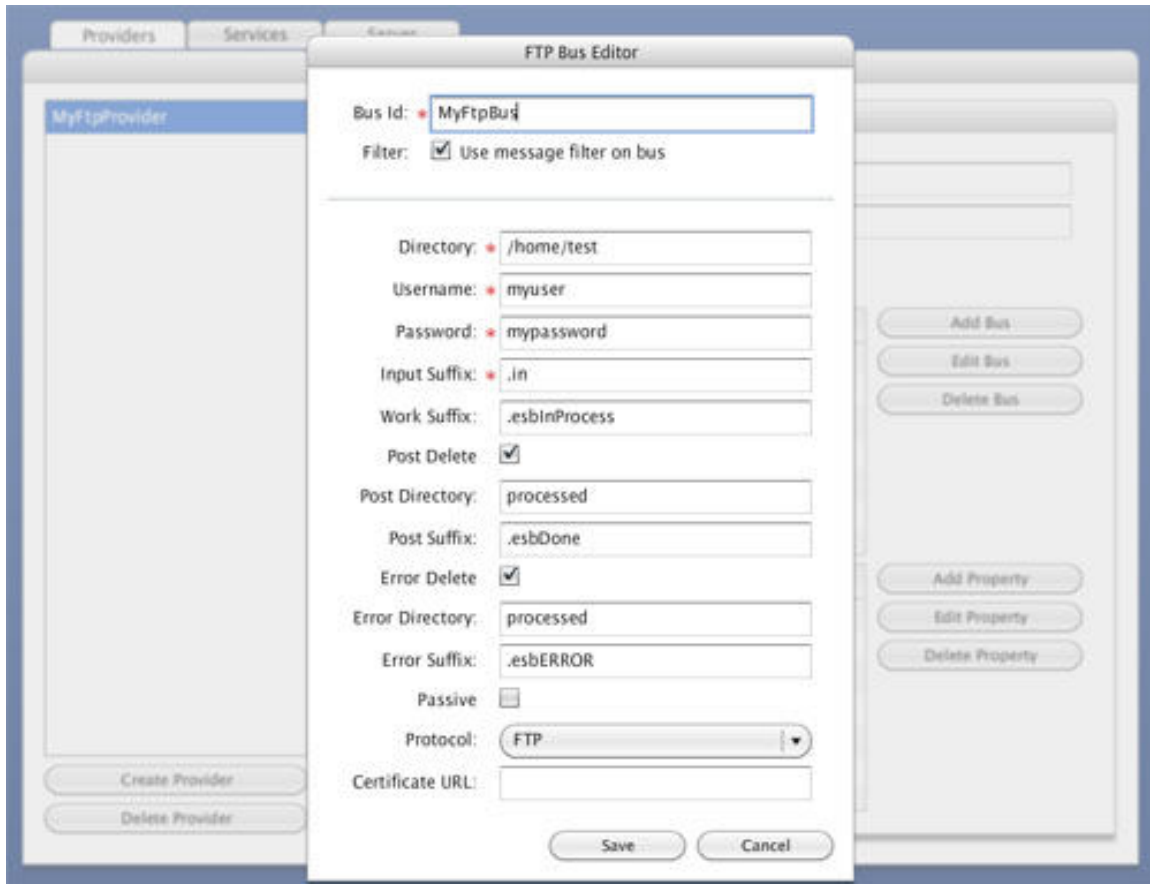
Property Name	Property Value



Step 2: Add an FTP Bus to the Provider

Clicking the *Add Bus* button on the right of the buses list opens a dialog for creating a new FTP bus. Note: The dialog that comes up depends of the type of provider you created. For instance, only JMS buses can be added to a JMS provider. Add a name for the FTP bus and fill in the required fields on the FTP message filter. Click *Save* to create the new bus for the provider.

Add an FTP Bus to the Provider



Step 3: Add a Service

Click the *Services* tab and choose *Create Service* at the bottom of the services list. Fill in the category and name under which the service will be registered. Optionally, fill in a description for the service. Click *Create* to add the new service to the configuration.

Add a Service

Providers Services Server

Specify services that consume data from providers

TestCategory:TestService

TestCategory:TestService Service

Category: TestCategory

Name: TestService

Description: A test service.

Apply Changes

Listener Name	Bus Reference	Max Threads	Gateway

Add Listener

Edit Listener

Delete Listener

Action Name	Action Class	Processor

Add Action

Edit Action

Delete Action

Templates

Create Service

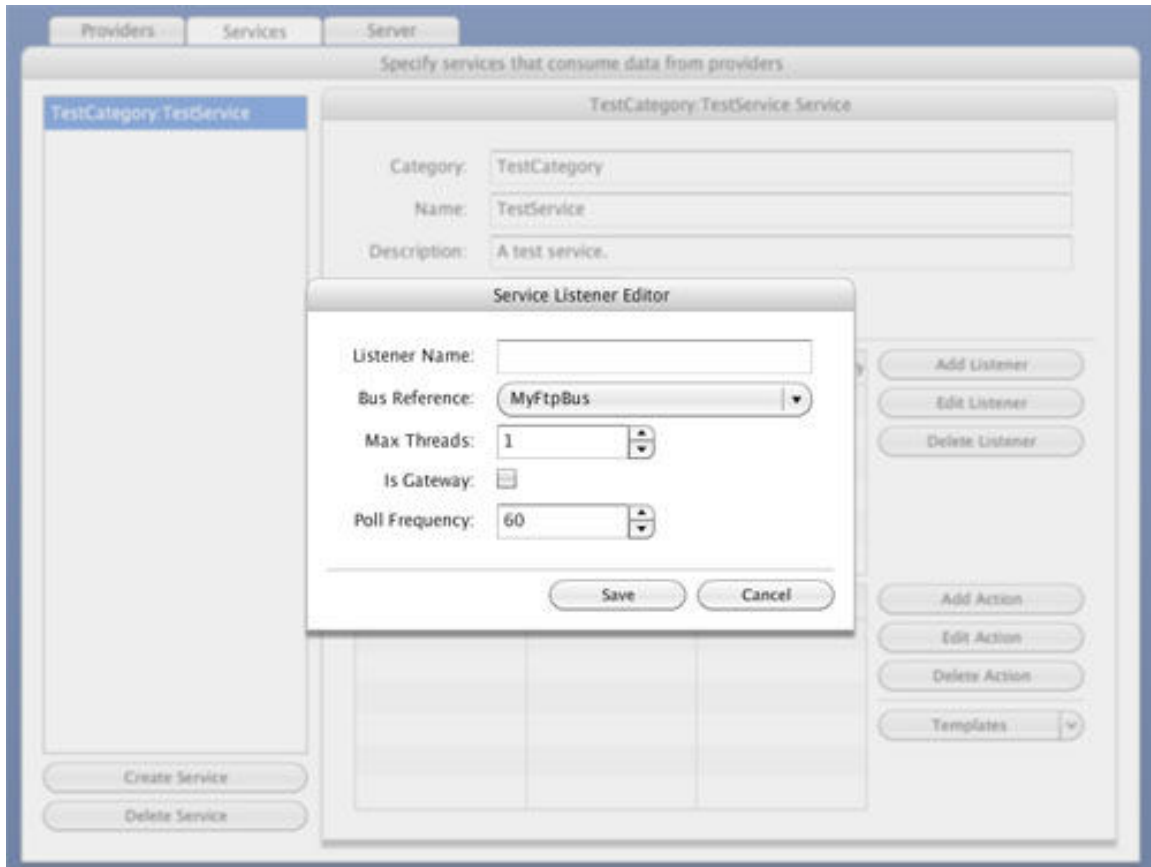
Delete Service



Step 4: Add a Listener to the Service

A listener will connect the provider created in step 1 to the service created in step 3 via the bus created in step 2. Click *Add Listener* at the right of the listeners panel to open the service listener dialog. Fill in the name of the listener and choose the bus from the dropdown. Update the other fields as needed and click *Save* to add the new listener to the service. Note: The type of listener is determined by the type of bus chosen in the dropdown.

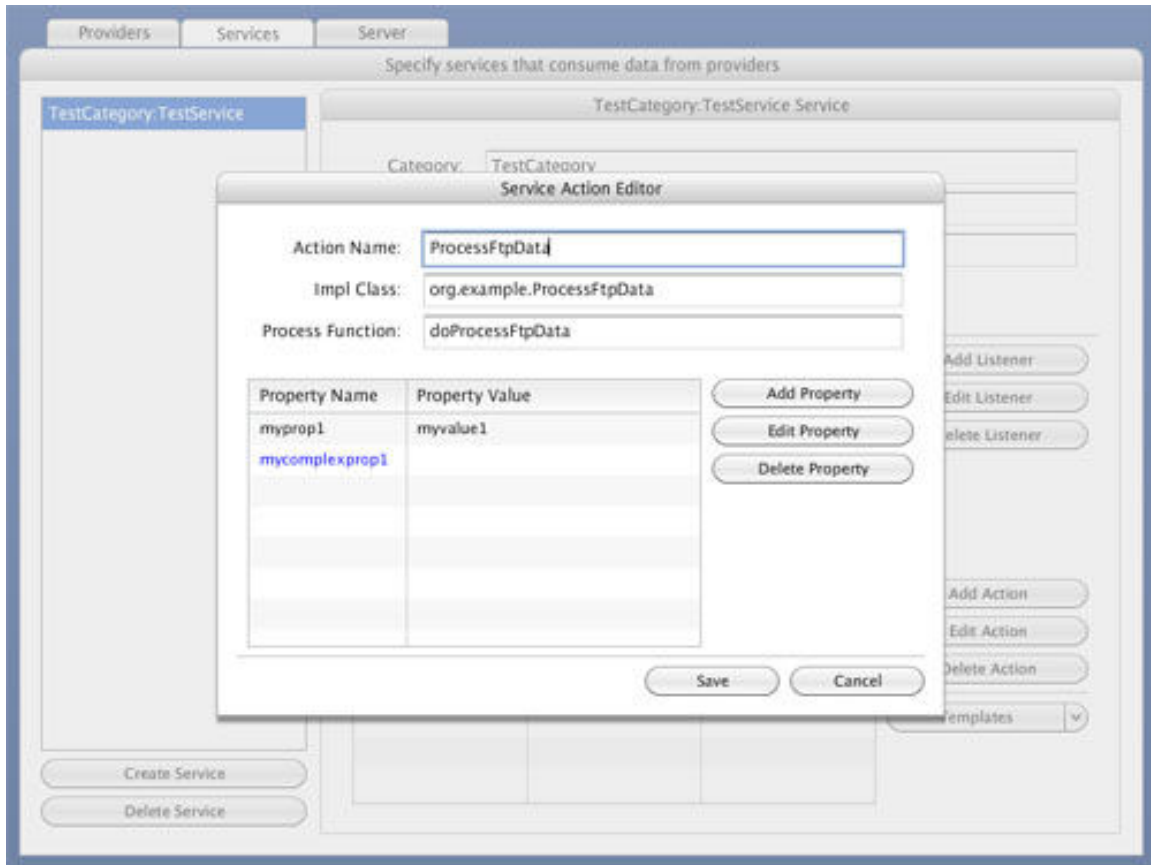
Add an FTP Listener to the Service



Step 5: Add an Action to the Service

Data processing in a service is handled by a chain of actions. Click *Add Action* to the right of the actions panel to open the service action dialog. Fill in the name of the action, its implementation class, and (optionally) a processing function. Properties for actions may be added, edited, or deleted in the property panel at the bottom of the dialog. The general case is for properties to be simple name/value pairs, but properties may also contain nested XML content. When done, click *Save* to add the new action to the service.

Add an Action to the Service



Step 6: View and Save Configuration

All of the required components have been added to the configuration. Click the *Server* tab and choose *View Configuration XML* to see the XML created by the editor. The next step is to push the XML to the server (overwriting the `jbossesb.xml` in the configuration directory). Press *Save Configuration* to upload the XML to the server. The server will attempt to parse the XML and then deploy it.

Saving the Updated Configuration to the Server

